

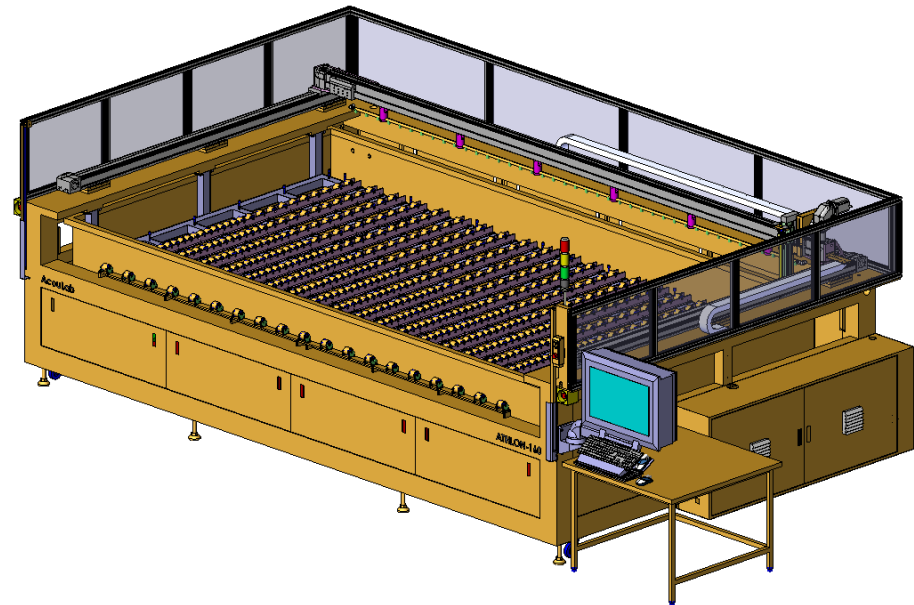
# Scanning Acoustic Microscope





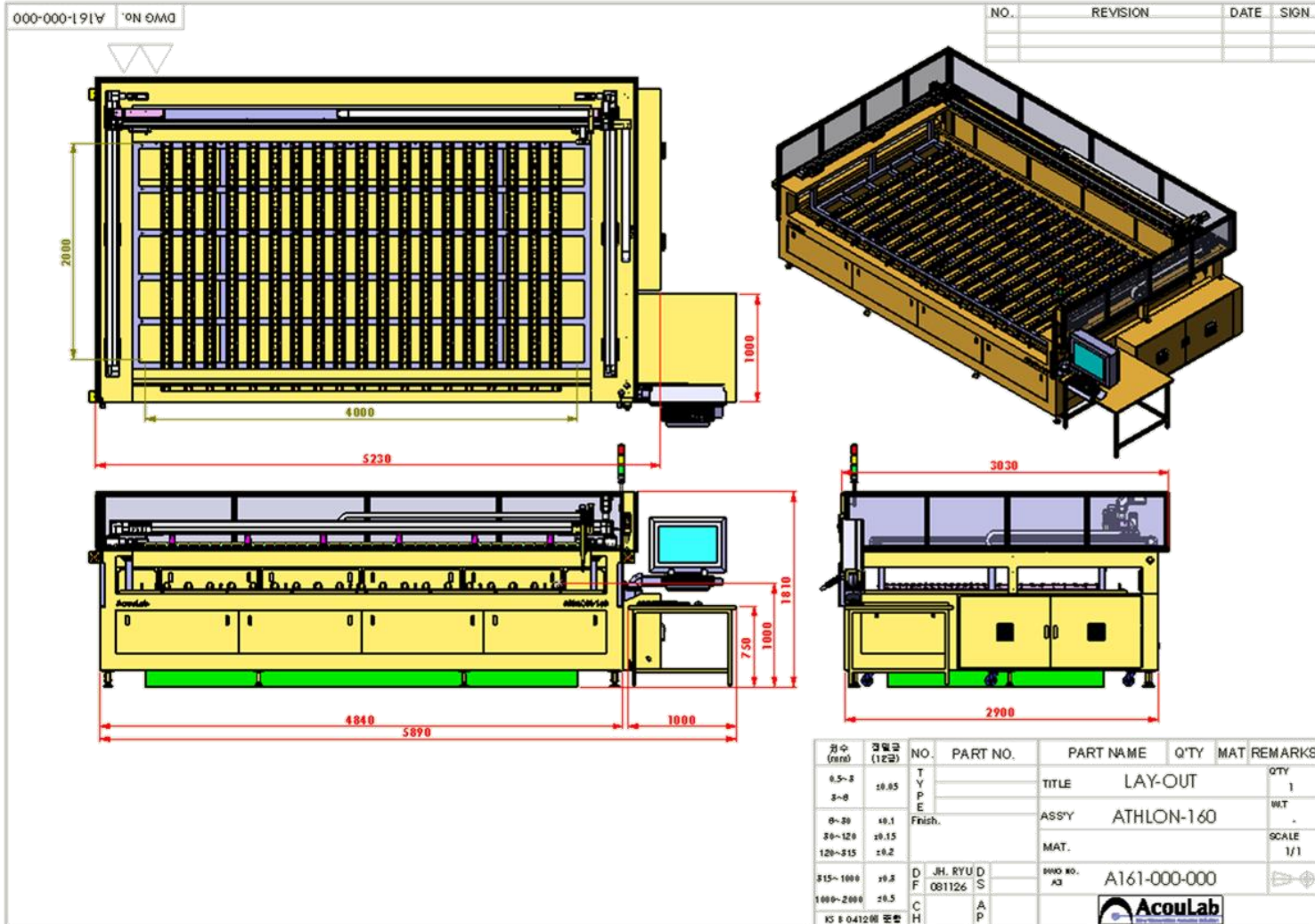
## *ATHLON for ITO Sputtering Target*

1. Large Scanning Area : 4,000mm x 2,000mm x 250mm
2. Lifter for Bath (immersion tank) up/down system
3. Air blower for quick dry of samples (Option)
4. High Speed with high resolution system
5. Fully S/W control
6. 27" monitor or 24" monitor arm



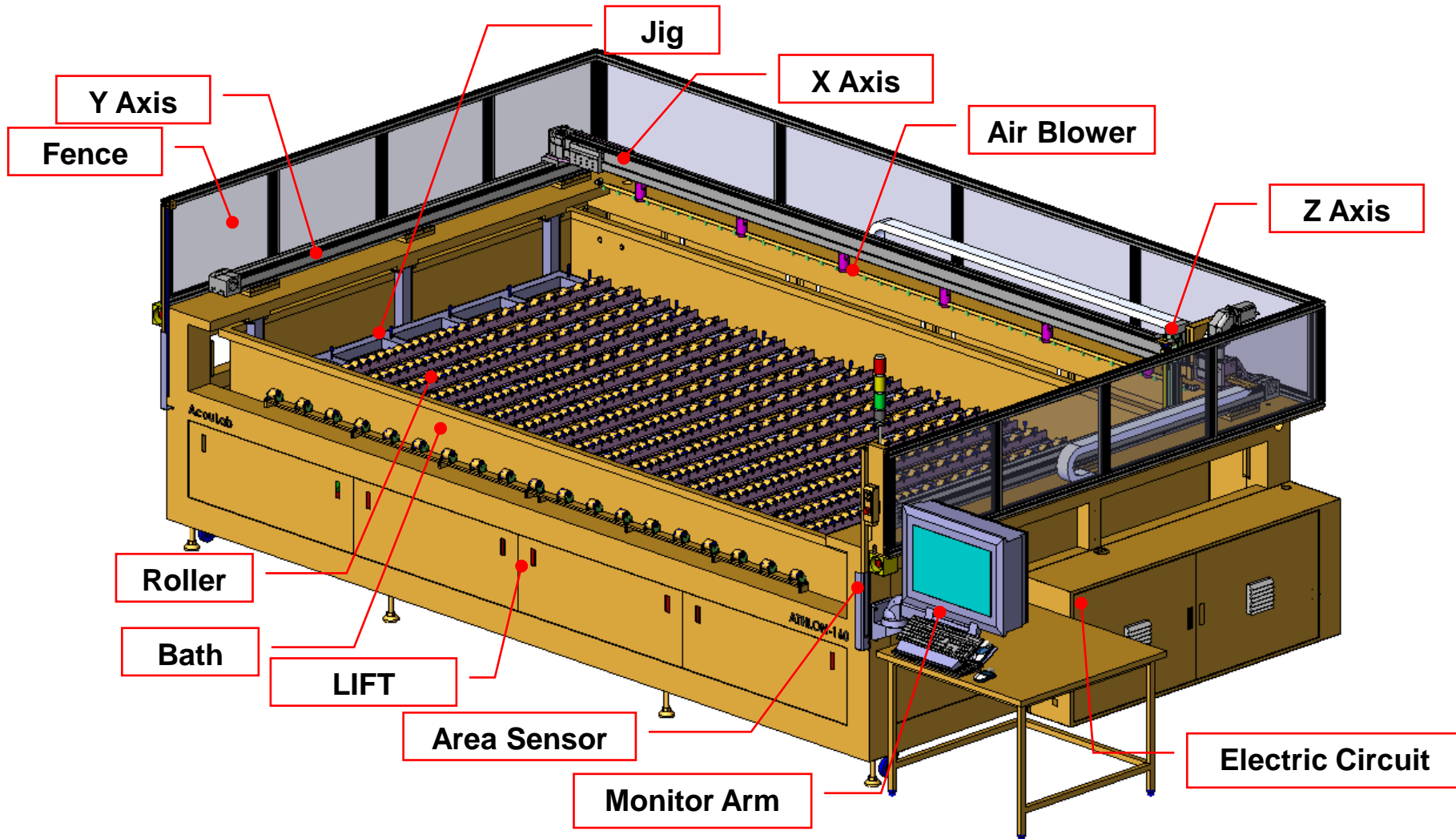


## 1. Lay-out (ATHLON-SL)



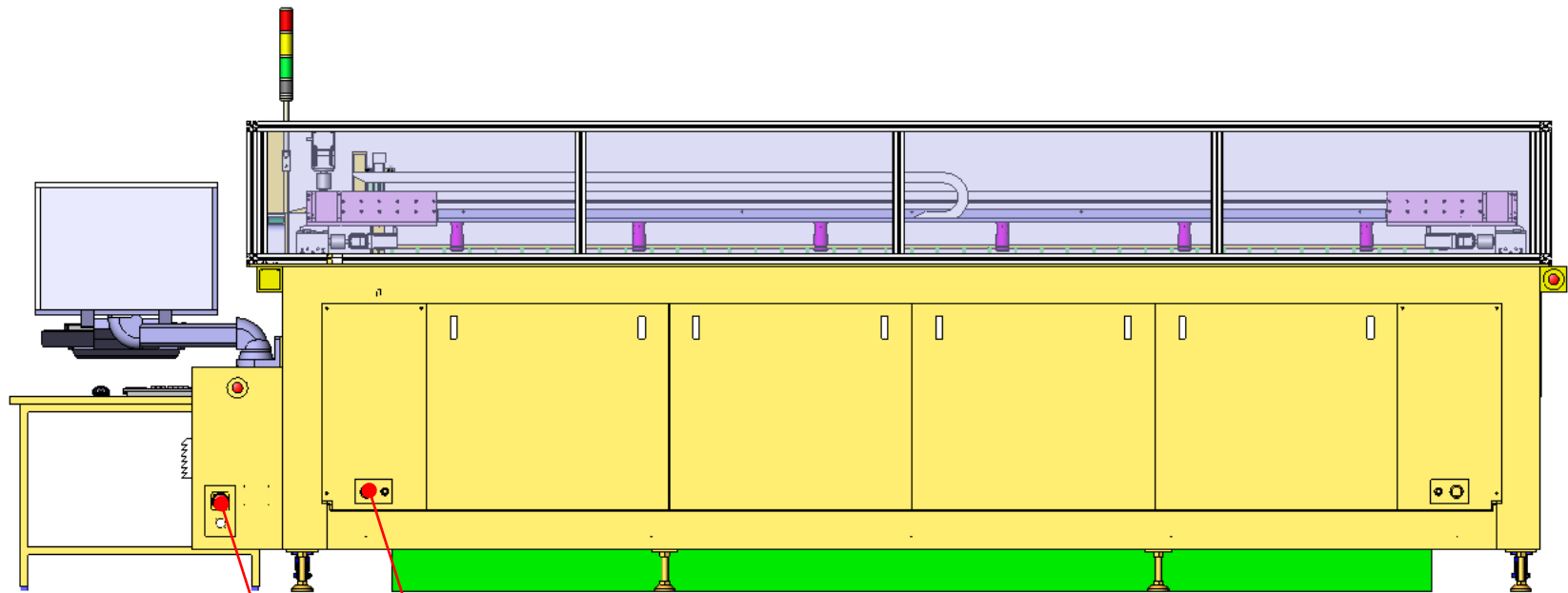


## 2. Configuration





## - Configuration (Rear)



Water in Ø16 (2 Spot)  
Water out Ø50 (2 Spot)

Main Power

Lift Stroke : 250mm



## - Configuration





## 3. Specifications

**Frequency Range : 1~ 150MHz**

**A/D board sampling rate : 1GHz**

**Floor Size : 5,640(L) x 3,030(W) x 1,810(H)**

**Scan Area : 4,100 x 2,100 x 250**

**Bath Inner Size : 4,390 x 2,340 x 400**

**X Axis : Servo Motor\_Timing belt**

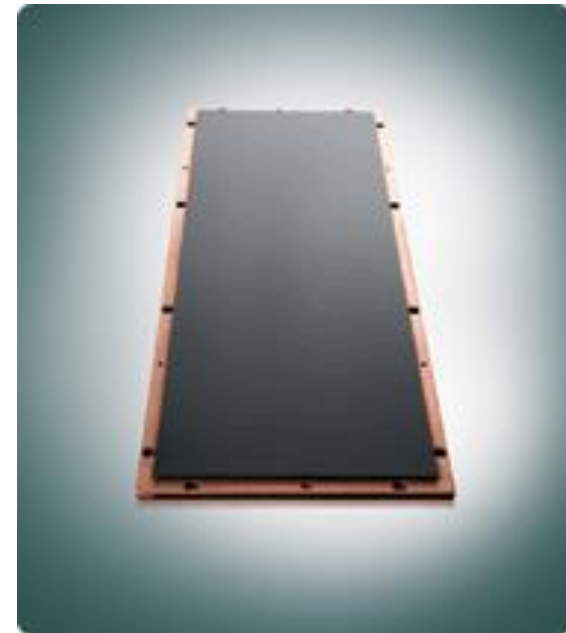
**Y Axis : Servo Motor\_Timing belt (Torsion Bar)**

**Z Axis : Step Motor (Lead Screw)**

**Lift : AC Motor (2.25KW)\_Hydraulic Lift**

**Utility : Main Power → 220ACV 3Phase**

**Main Air → 5~6 kgf**





## 4. Software

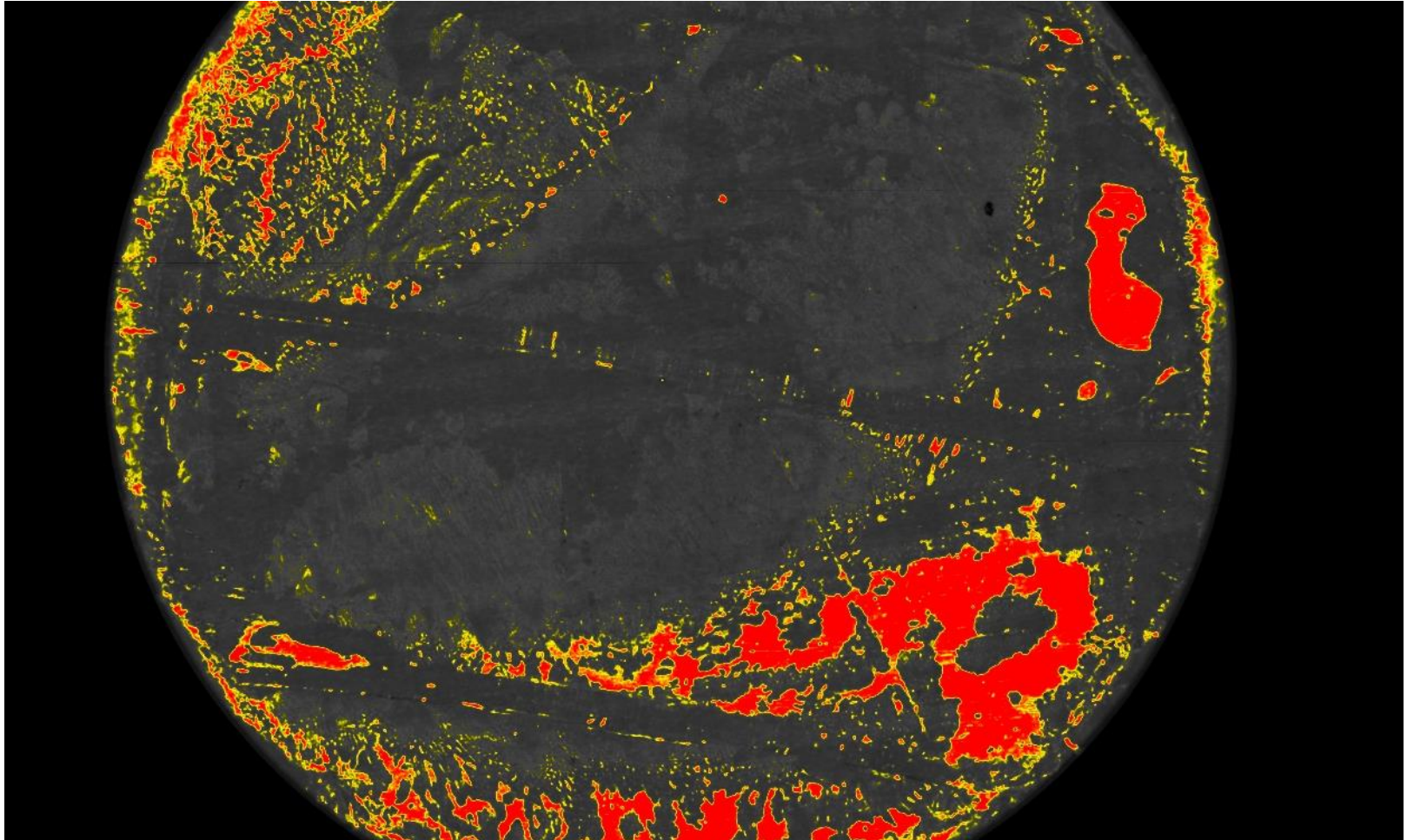
### ScanUp and ScanUpViwer Software

- Windows 10 base software for system control and image analysis
- Image Processing : Zoom In/Out, Image Inversion (B&W), Brightness and Contrast Adjustment
- Automatic and manual setup
- Automatic focusing and sizing
- A, B, C-Scan, Bulk-Scan, TOF 3D display & V3D™
- Bulk Scan for Off-line Analysis and Ultrasonic Signal Processing tool kits
- Multi-Layer Scan (Upto 20 layers), Specific Area Scan
- C-Scan image for amplitude, time of flight and phase inversion
- FFT for transducer evaluation
- Size measurement of debonding area
- 24 bit pseudo color and black & white display



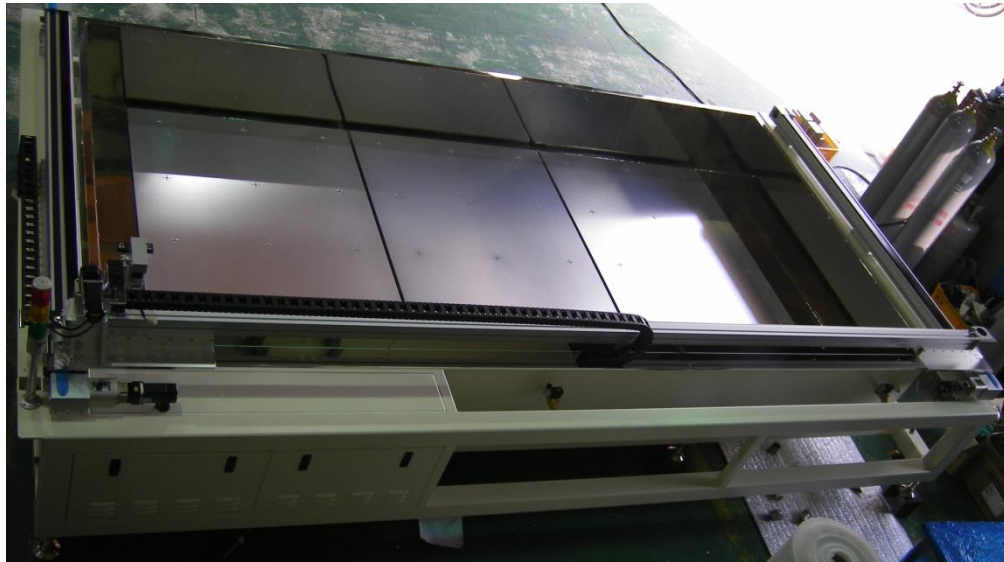
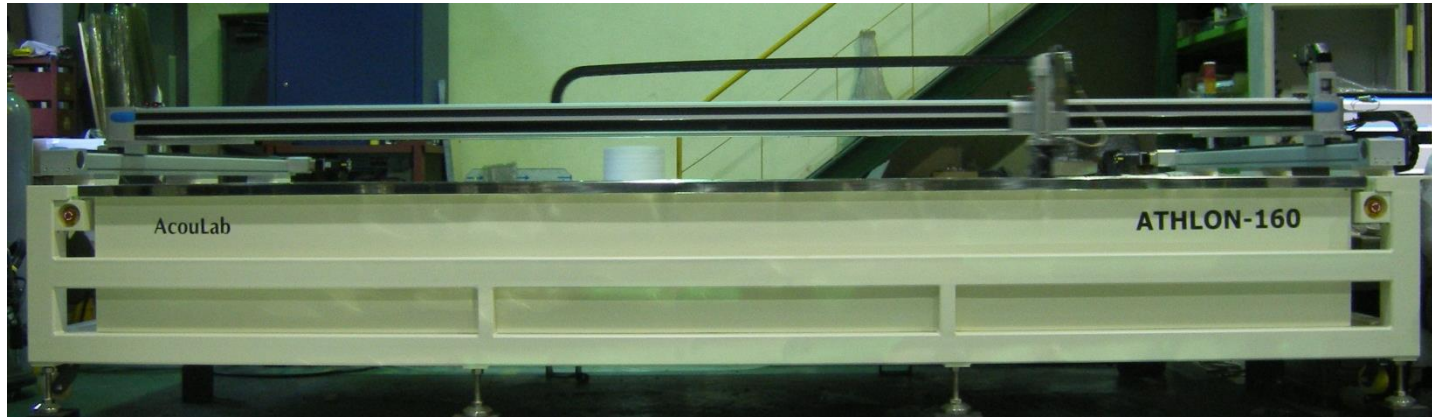


## 5. Test result



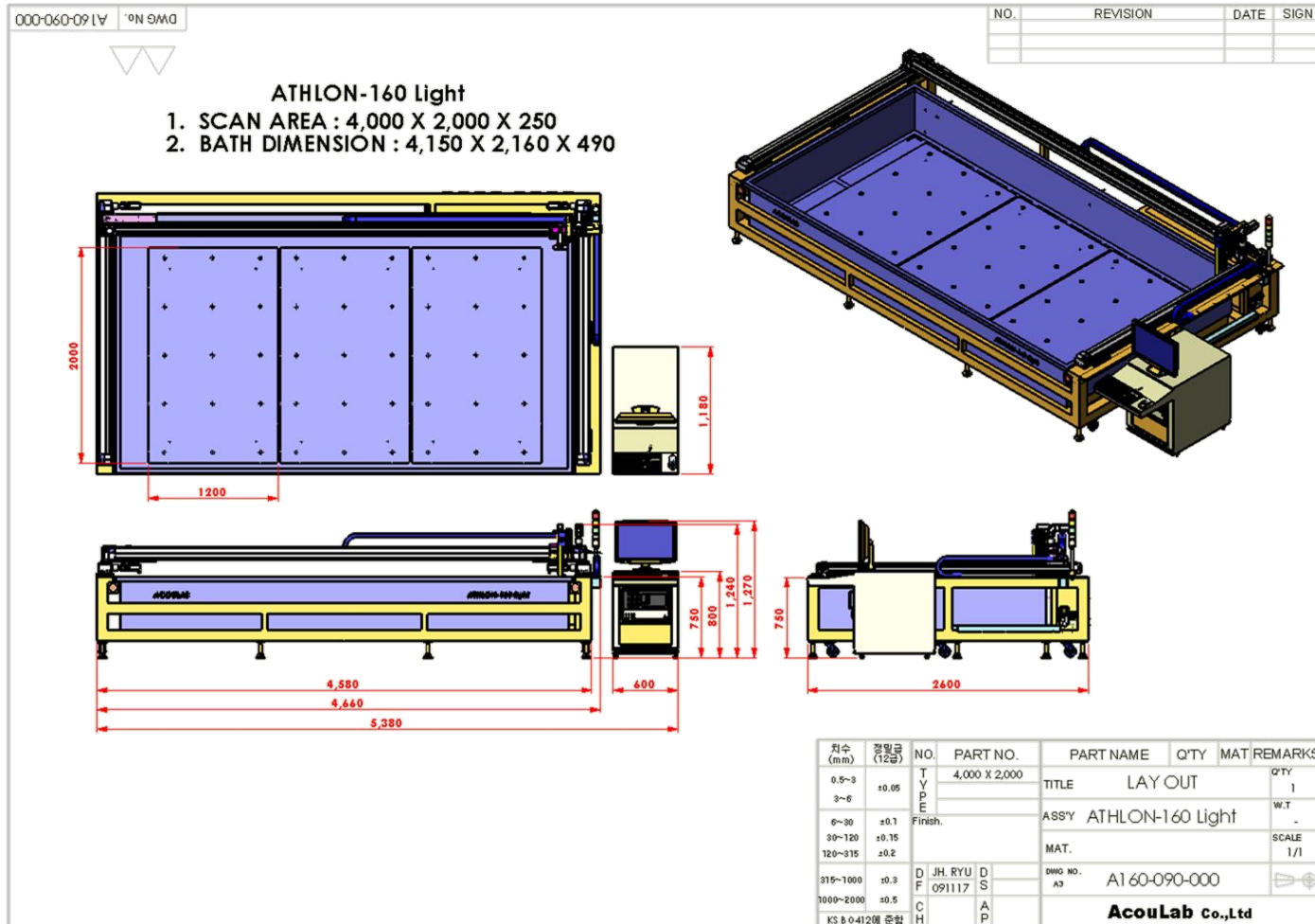


## - ATHLON-S



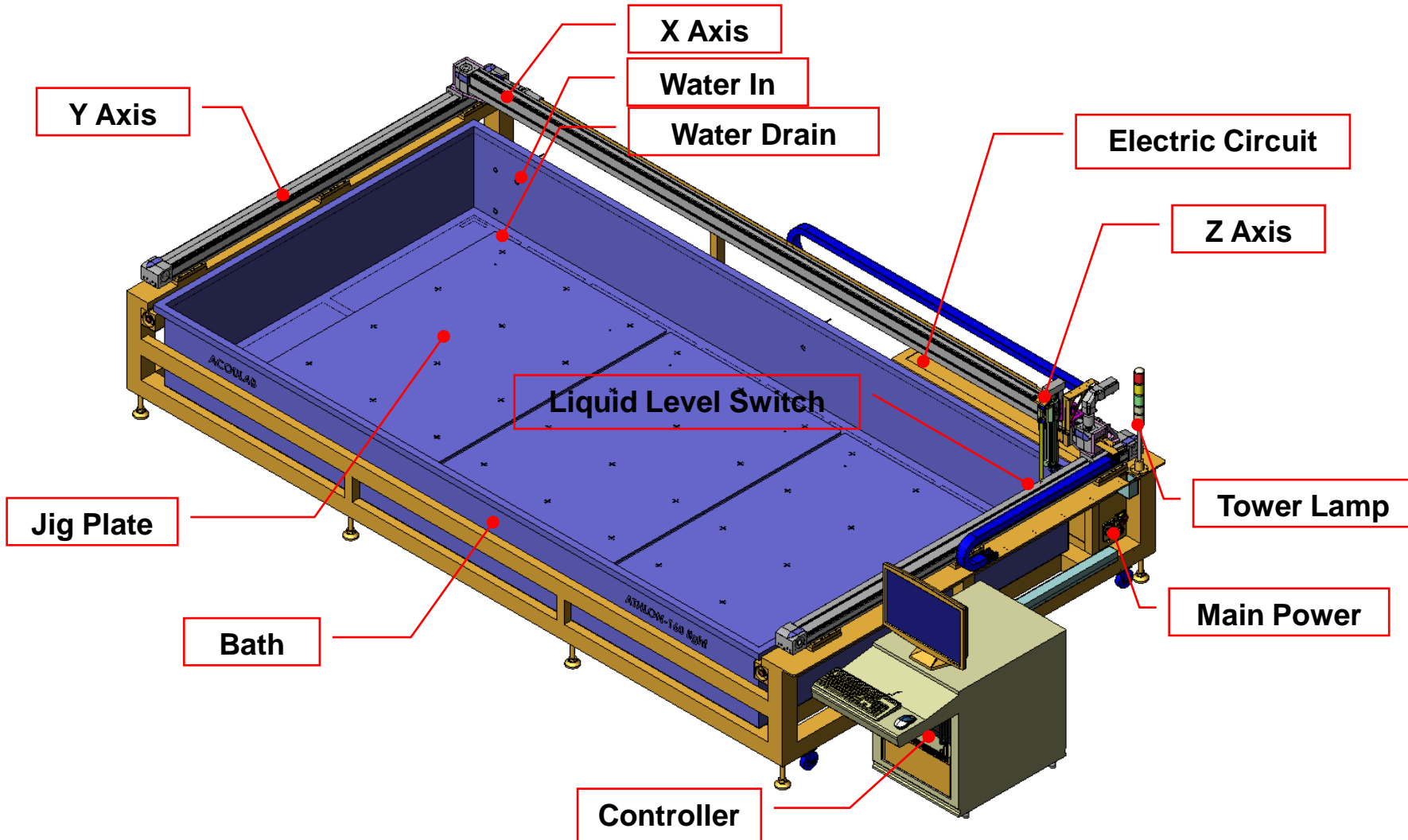


## 6. ATHLON-160S Lay-out





## 7. Configuration





## 8. Specifications

**Floor Size : 5,380(L) x 2,600(W) x 1,270(H)**

**Scan Area : 4,000 x 2,000 x 250**

**Bath Inner Size : 4,150 x 2,160 x 490**

**X Axis : Servo Motor\_Timing belt**

**Y Axis : Servo Motor\_Timing belt (Torsion Bar)**

**Z Axis : Step Motor (Lead Screw)**

**JIG : 1,200(L) x 2,000(W) x 12(H\_thickness) SUS plate\_SUS304**

**Utility : Main Power → 220ACV 1Phase 30A**

**Water In → Ø15 2ea**

**Water Out (Drain) → Ø50 1ea or 2ea**

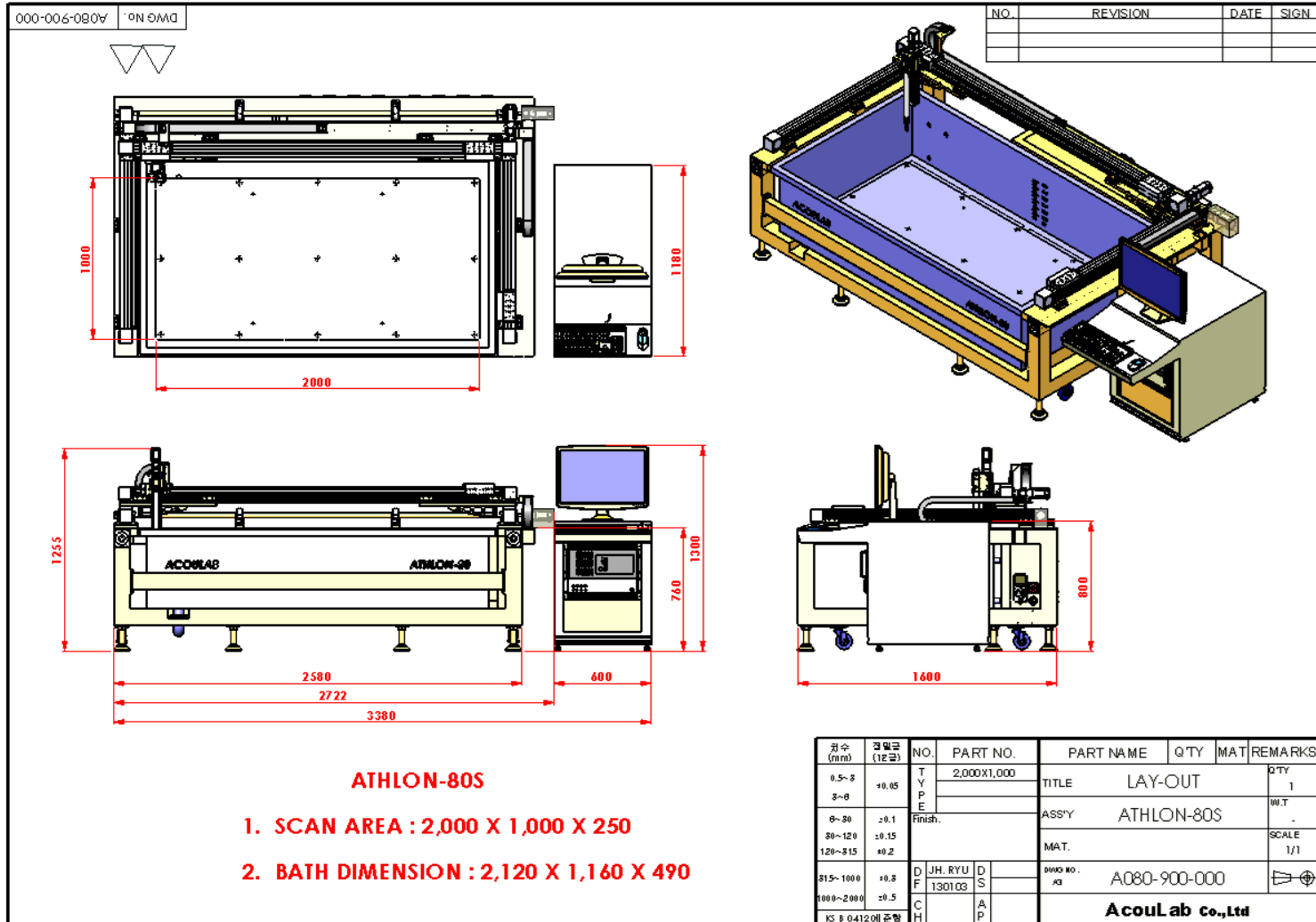


## 9. ATHLON-60S





## 10. ATHLON-80S Lay-out





## 11. Specifications

**Floor Size : 3,380(L) x 1,600(W) x 1,270(H)**

**Scan Area : 2,000 x 1,000 x 250**

**Bath Inner Size : 2,120 x 1,160 x 490**

**X Axis : Servo Motor\_Timing belt**

**Y Axis : Servo Motor\_Timing belt (Torsion Bar)**

**Z Axis : Step Motor (Lead Screw)**

**JIG : 2,000(L) x 1,000(W) x 12(H\_thickness) SUS plate\_SUS304**

**Utility : Main Power → 220ACV 1Phase 30A**

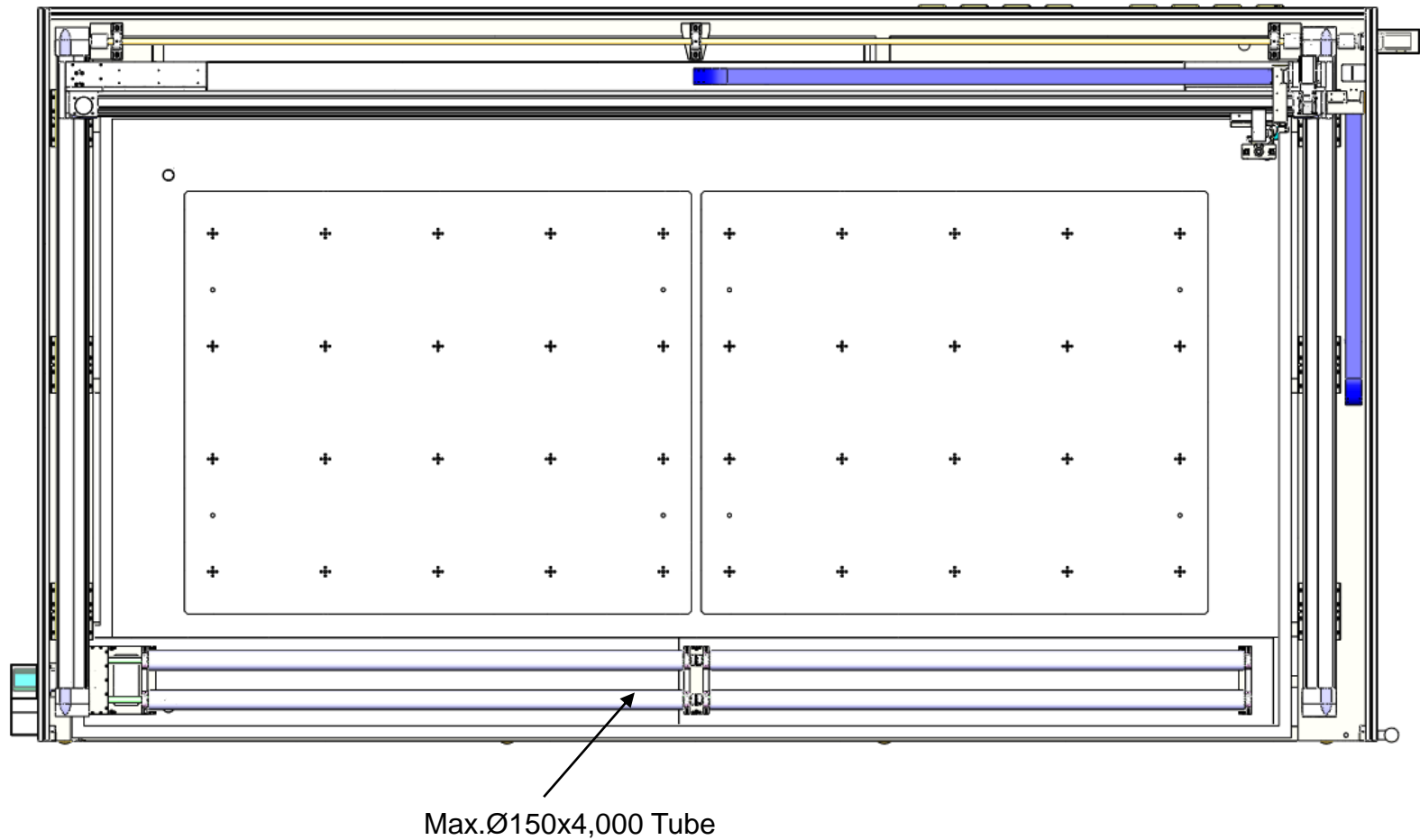
**Water In → Ø15 1ea**

**Water Out (Drain) → Ø50 1ea**





## 12. Athlon-160SR





## 13. Specifications

**Floor Size : 5,380(L) x 2,600(W) x 1,270(H)**

**Scan Area : 4,000 x 2,000 x 250**

**Bath Inner Size : 4,150 x 2,160 x 490**

**X Axis : Servo Motor\_Timing belt**

**Y Axis : Servo Motor\_Timing belt (Torsion Bar)**

**Z Axis : Step Motor (Lead Screw)**

**R Axis : Servo motor**

**JIG : 1,800(L) x 1,500(W) x 12(H\_thickness) SUS plate\_SUS304**

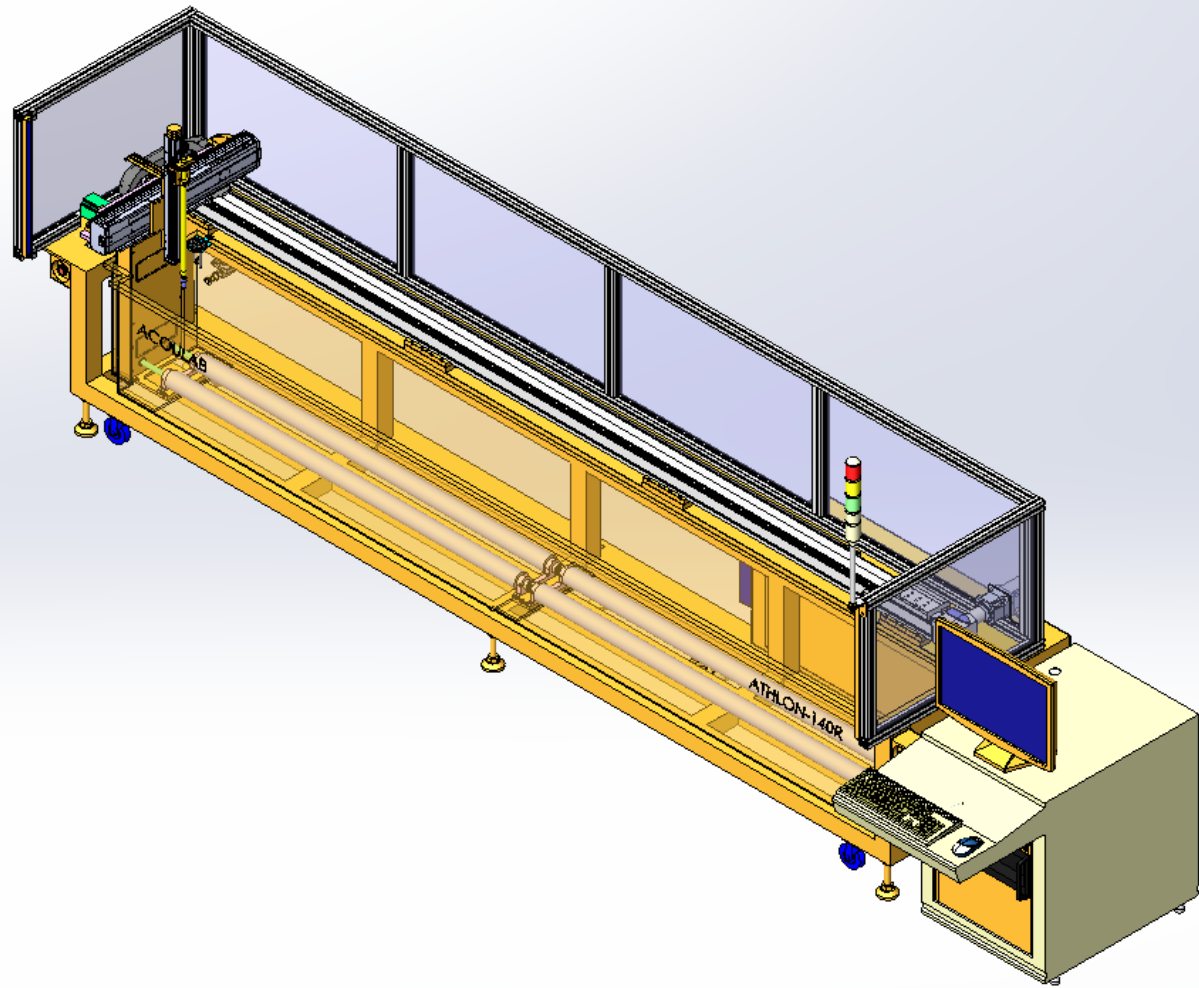
**Utility : Main Power → 220ACV 1Phase 30A**

**Water In → Ø15 2ea**

**Water Out (Drain) → Ø50 1ea or 2ea**



## 14. ATHLON-R





## 15. Specifications

**Floor Size : 4,255(L) x 985(W) x 1,325(H)**

**With controller : 4,900(L) x 1,180(W) x 1,940(H)**

**Scan Area : 4,100 x 350 x 300**

**Bath Inner Size : 4,390 x 440x 470**

**X Axis : Servo Motor\_Timing belt**

**Y Axis : Step Motor\_(Lead screw)**

**Z Axis : Step Motor\_ (Lead Screw)**

**R Axis : Servo Motor**

**Utility : Main Power → 220ACV 1Phase 30A**

**Water In → Ø15(15A) 1ea**

**Water Out (Drain) → Ø50(40A) 1ea**





# AcouLab

New generation acoustic solution



## 16. ATHLON-Customize

